

Auxiliary Communications Service (ACS)
Adams County
Department of Emergency Services



Don Schmitt K3DCS
ACS Officer
ARES Emergency Coordinator

Adams County ACS Profile

- Adams County is located in the south central area of the state and sits on the Pennsylvania and Maryland border.
- The county is approx 1 ½ hour drive from the Washington and Baltimore Metro areas.
- Rural Adams County population is approx. 101,400 with Gettysburg the largest municipality. Gettysburg's population is around 8,000 and includes three colleges in or adjacent to the Borough.
- The Gettysburg National Park can draw 30,000 visitors per day during peak periods in the summer. Many large tourist related events are held annually with possible related need for ACS to assist.
- Adams County is an assigned refugee reception county for possible Three Mile Island incidents. ACS services could be used to help support evacuations.
- Severe weather related events could involve the services of ACS.

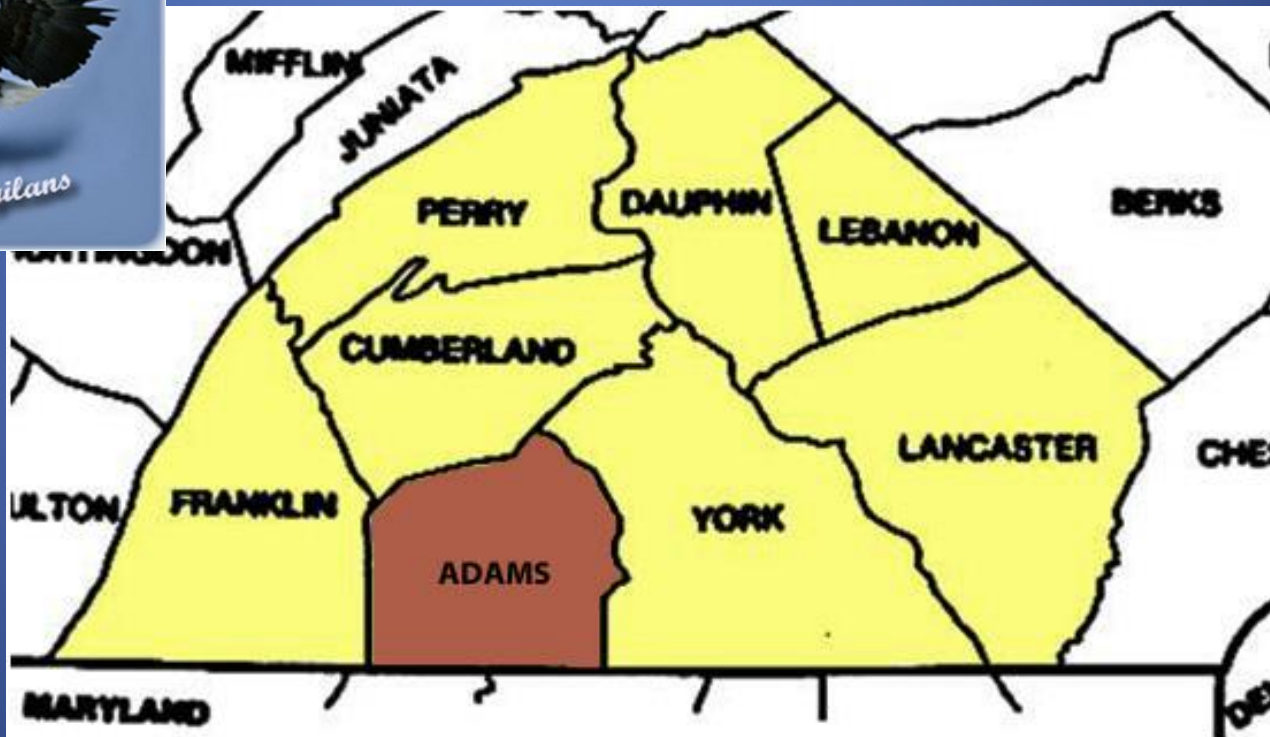
Past and Present

- Amateur Radio has had a presence in Adams County DES since the 1960's
- We've had continual strong support from the County EMA Directors for over 40 years
- The local club, Adams County Amateur Radio Society (ACARS), is EmComm focused and provides the bulk of the manpower for County ACS activities
- The RACES operation was originally located within the previous dispatch center located at the current county Courthouse in downtown Gettysburg
- In the mid-2000's DES moved to its current location 4 miles east of Gettysburg. RACES, now ACS, was provided a dedicated 500 square foot room adjacent to the main DES operations center



Where does Adams County ACS fit in the regional picture?

The county is part of the South Central CounterTerrorism Task Force (SCTF) ...



... And

Within the SCTF organization Adams County ACS participates with the Amateur Radio Workgroup (ARWG), a committee that coordinates and provides manpower and equipment for reliable auxiliary communications to support the county EMA's and hospitals within the SCFT region

... And

It was through SCTF and the ARWG that Adams County was able to obtain two DHS grants for the purchase of a new 145.35 VHF repeater installed in 2009 and the 443.10 UHF repeater installed Spring 2011

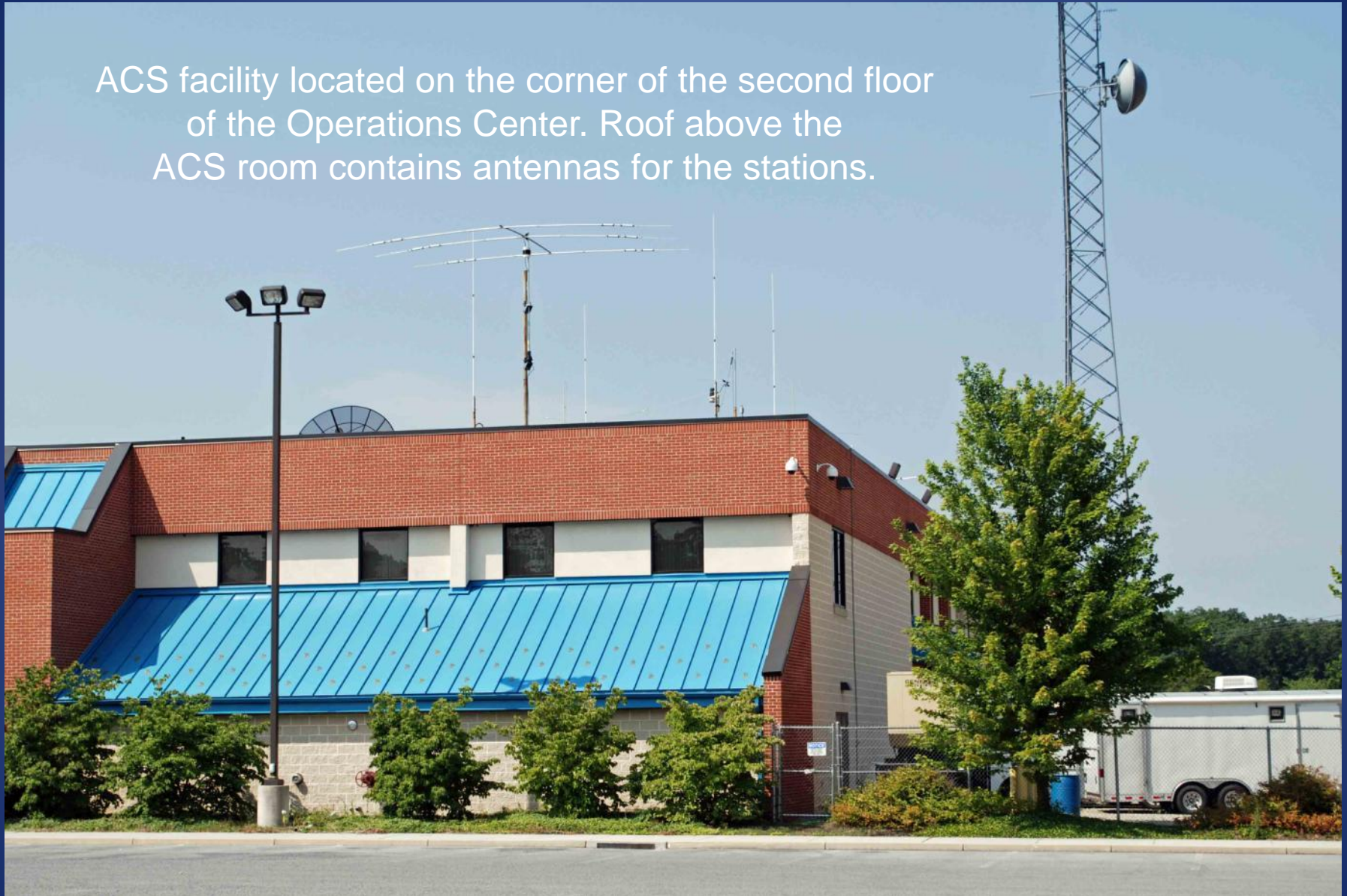
Let's take a brief tour ...

Adams County Emergency Services Center is the
home of Adams County ACS



Auxiliary Communications Service
Adams County Department of Emergency Services

ACS facility located on the corner of the second floor of the Operations Center. Roof above the ACS room contains antennas for the stations.



ACS antennas on DES building

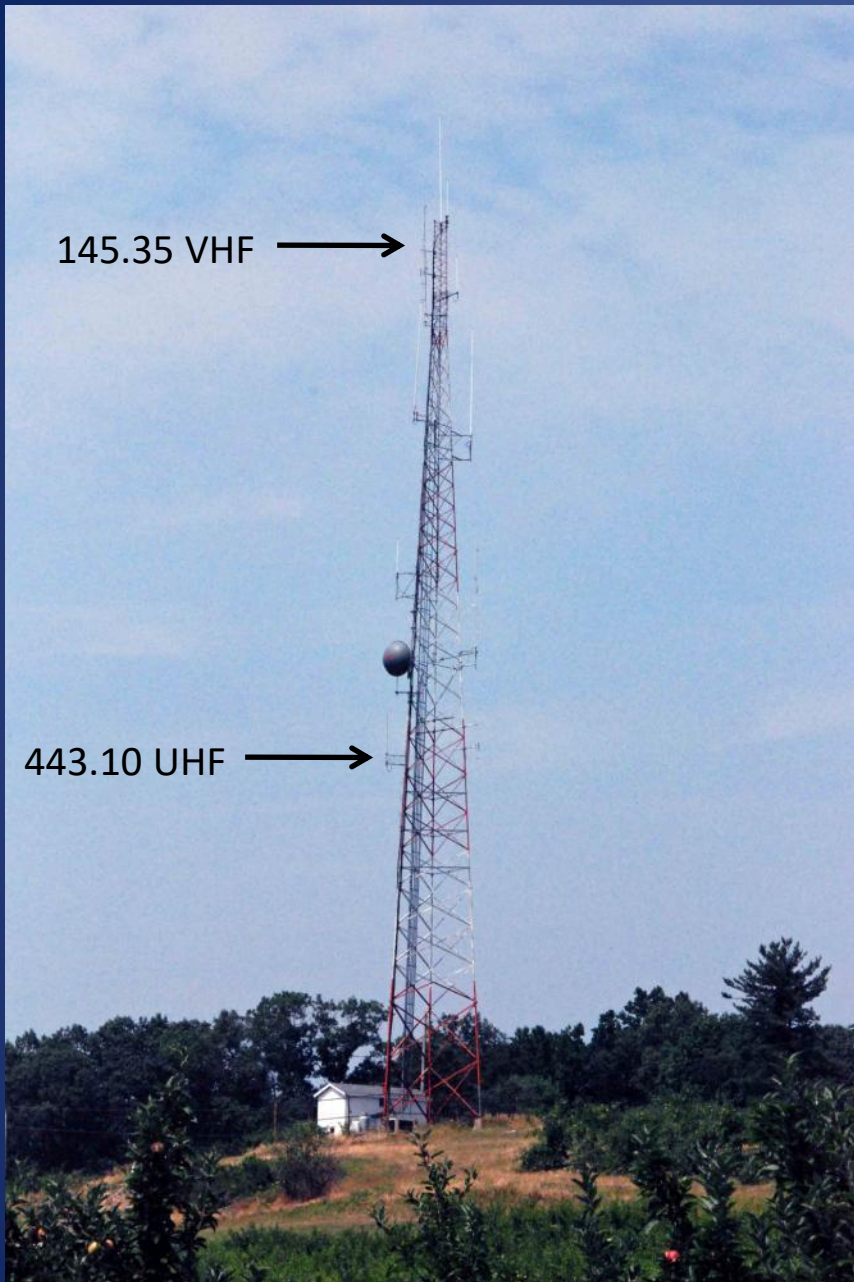


Auxiliary Communications Service
Adams County Department of Emergency Services

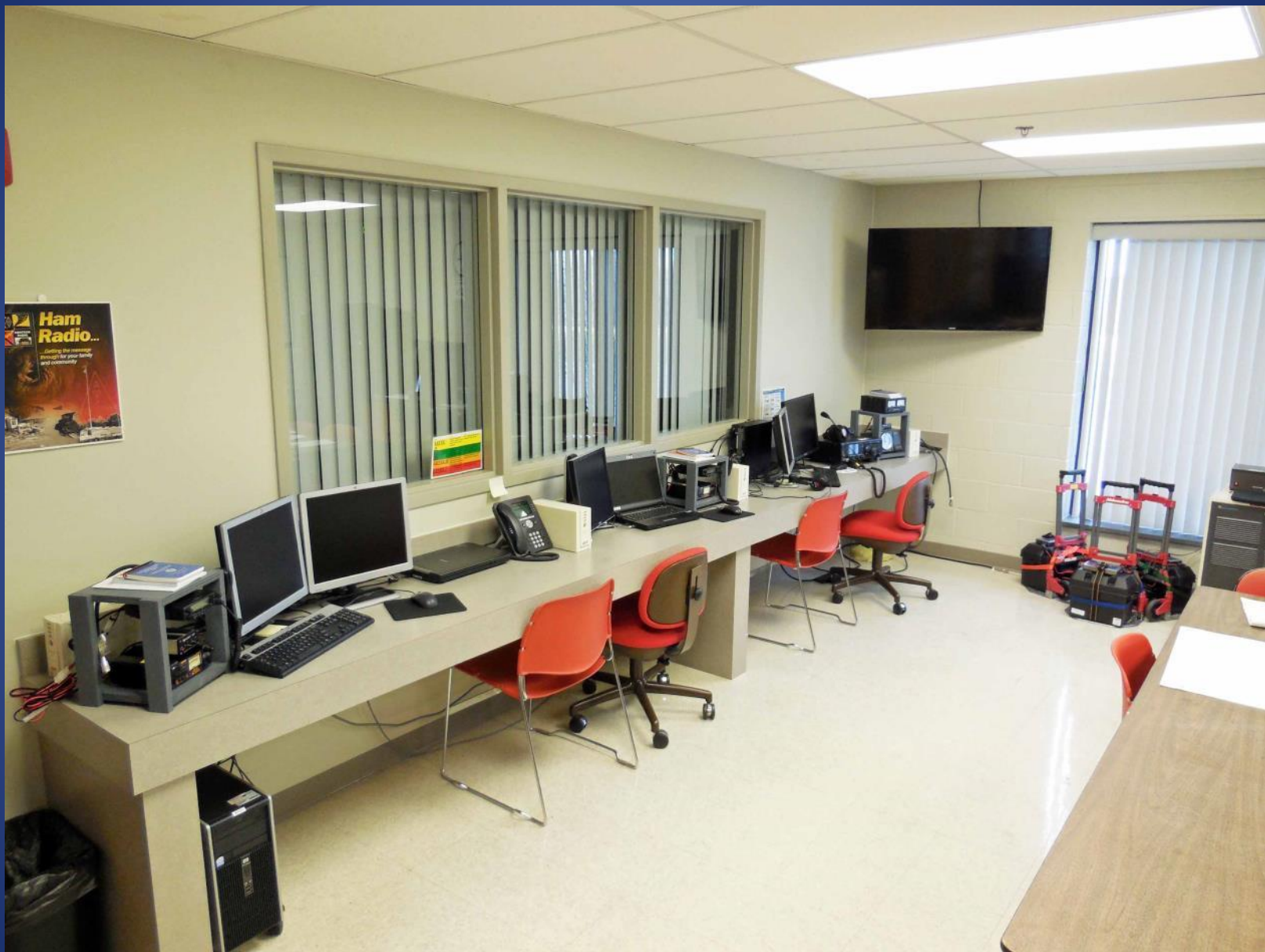
ACDES Public Safety Tower Site

Located side of Adams County,
just west of Arendtsville, PA

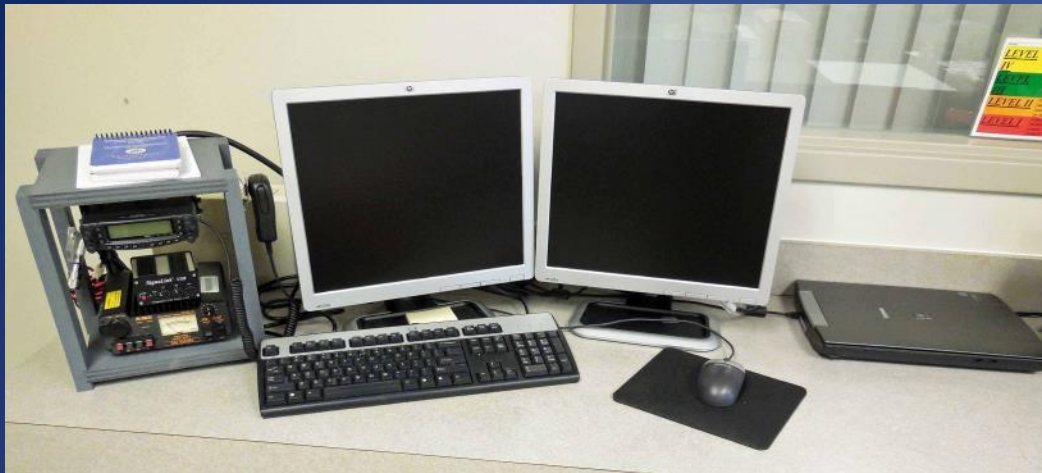
- ACS repeaters co-located with public safety 800 mhz P25 radio system
- 145.35 PL 103.5 & 443.10 PL 103.5
- Approx elevation: 1,300' at base
- Repeaters are Motorola MTR3000 series



ACS Station Room – West View



Auxiliary Communications Service
Adams County Department of Emergency Services



VHF/UHF Position #1
Yaesu FT-8900
Signalink data interface
Flatbed scanner



VHF/UHF Position #2
Yaesu FT-8900



HF Position #1 Yaesu FTDX-1200 Carolina Windom antenna Signalink data interface

Auxiliary Communications Service
Adams County Department of Emergency Services



North Wall Left – Kenwood TM-G707 VHF/UHF Station #3 Right – Alinco 220 Mhz Station

Auxiliary Communications Service
Adams County Department of Emergency Services



North Wall

Data cabinet area

All ACS laptop and desktop computers are connected through this network system

Network router

32 port network switch

Network attached storage (NAS)

WiFi access point

AC power UPS

Behind the cabinet is a Brother network laser printer

ACS Station Room – East View



Auxiliary Communications Service
Adams County Department of Emergency Services



HF Position #2

TenTec Jupiter 10M-160M HF

80M Loop antenna

Multiband/Multimode Station
UHF to 160M

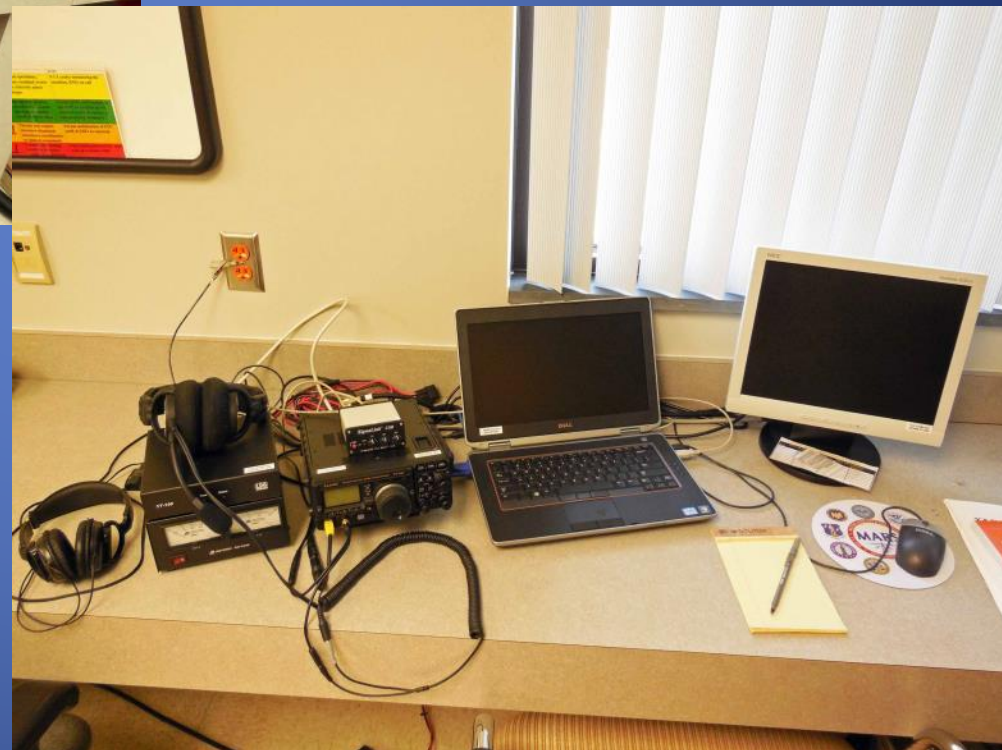
Yaesu FT-897

Signalink data interface

80 M loop antenna

6 M loop antenna

*This station is Gokit ready using
portable HF vertical antenna*





GOKIT CACHE

Three Radio Kits
Yaesu FT-8900 VHF/UHF
AC to DC power supply
AC power strip, headphones
50' RG-8X coax
Rolling carry case
80 amp gel cell battery on cart

Three Computer Kits
13" Dell laptop computer
Signalink data interface
Portable USB inkjet printer
Portable USB bar scanner

Three Antenna Kits
Comet GP-3 dual band antenna
Portable tripod base
Sling carry bag

EMCOMM ACTIVITIES

2011 TMI Exercise



2010 Wide Vigilance III

2011 MS Bike Ride



ANNUAL ARRL FIELD DAY – JUNE OF EACH YEAR



Auxiliary Communications Service
Adams County Department of Emergency Services